

MUSEO DE ARTE
CONTEMPORÁNEA DE
NAOSHIMA

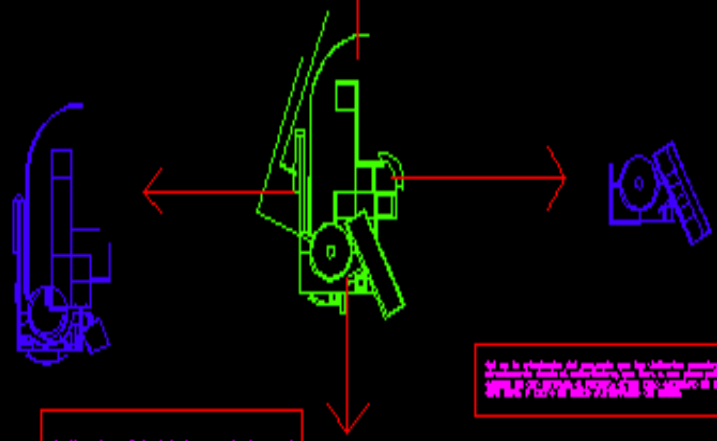
MARÍA DEL CARMEN CISNEROS
ALEJANDRA JARAMILLO



Il museo si inserisce nel tessuto urbano esistente, integrandosi con gli edifici circostanti e con il paesaggio circostante.

Il museo si inserisce nel tessuto urbano esistente, integrandosi con gli edifici circostanti e con il paesaggio circostante.

Il museo si inserisce nel tessuto urbano esistente, integrandosi con gli edifici circostanti e con il paesaggio circostante.



Il museo si inserisce nel tessuto urbano esistente, integrandosi con gli edifici circostanti e con il paesaggio circostante.

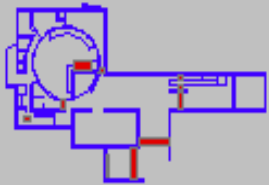
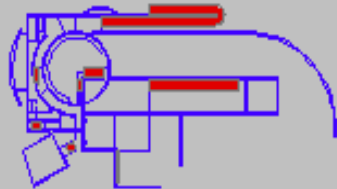
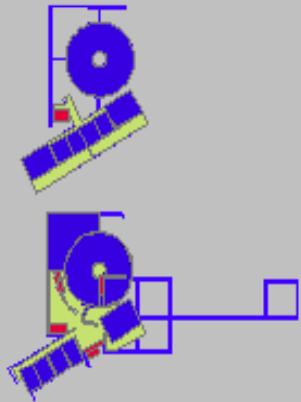
Il museo si inserisce nel tessuto urbano esistente, integrandosi con gli edifici circostanti e con il paesaggio circostante.

Il museo si inserisce nel tessuto urbano esistente, integrandosi con gli edifici circostanti e con il paesaggio circostante.

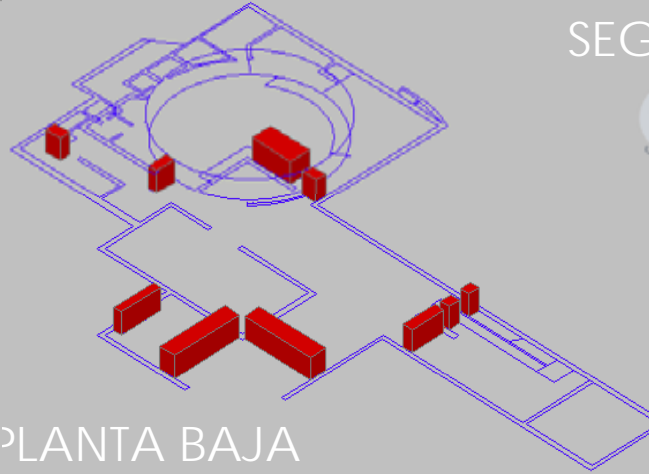
MUSEO DE ARTE CONTEMPORANEO NAOSHIMA - TADAO ANDO



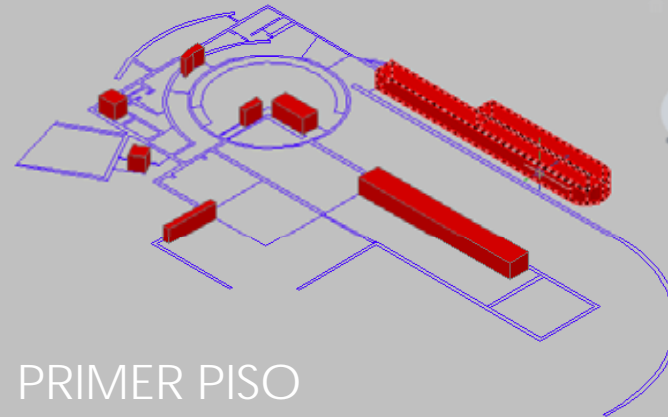
PUNTOS FIJOS



puntos fijos

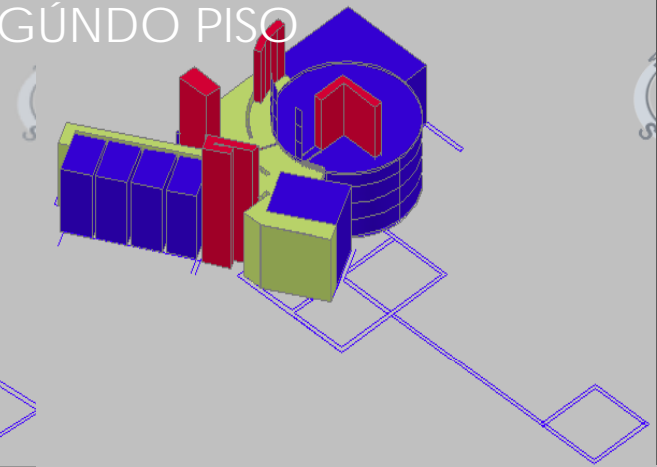


PLANTA BAJA

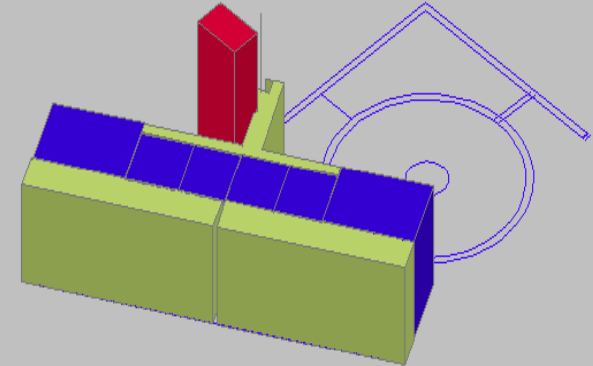


PRIMER PISO

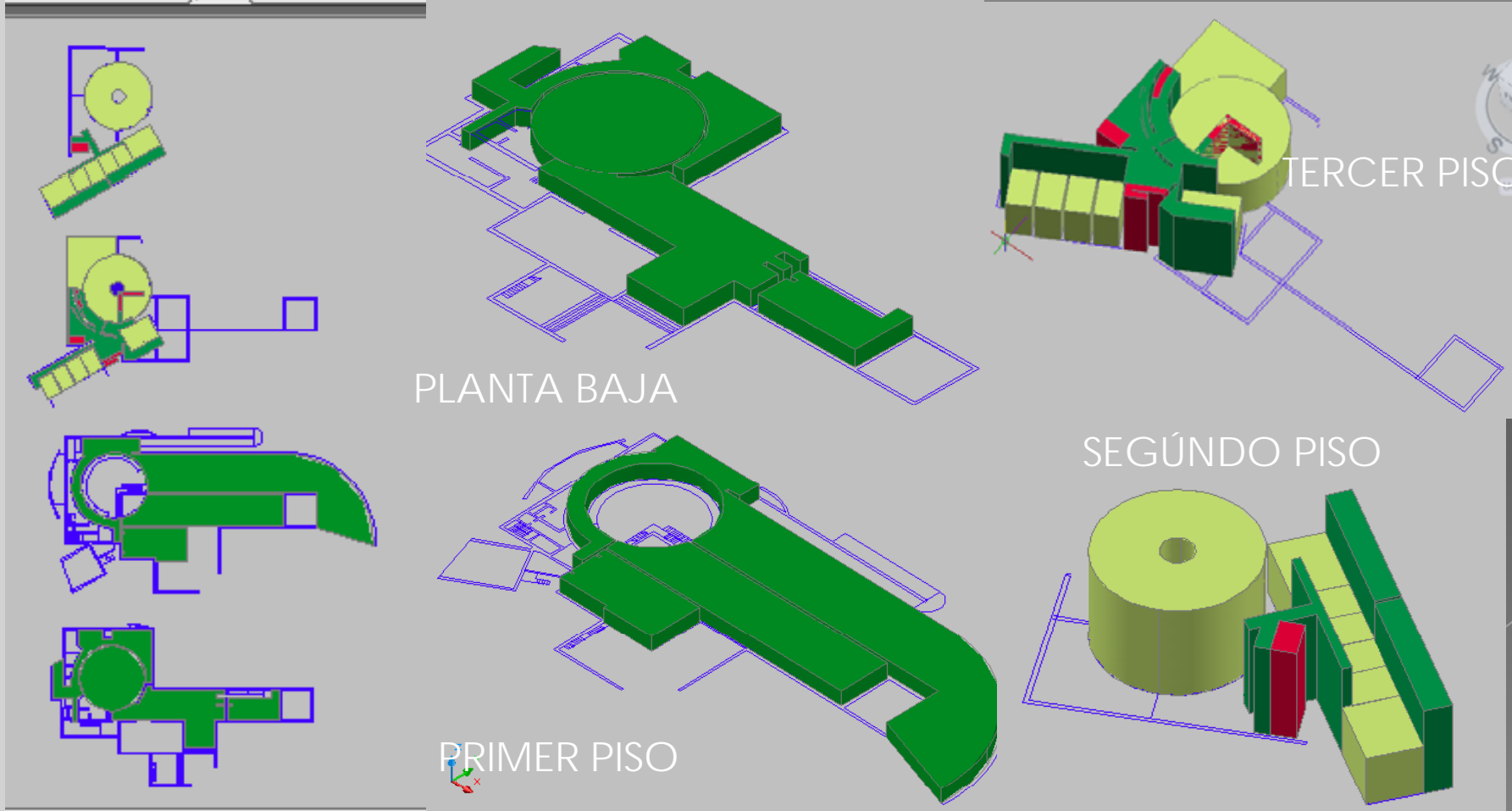
SEGÚNDO PISO



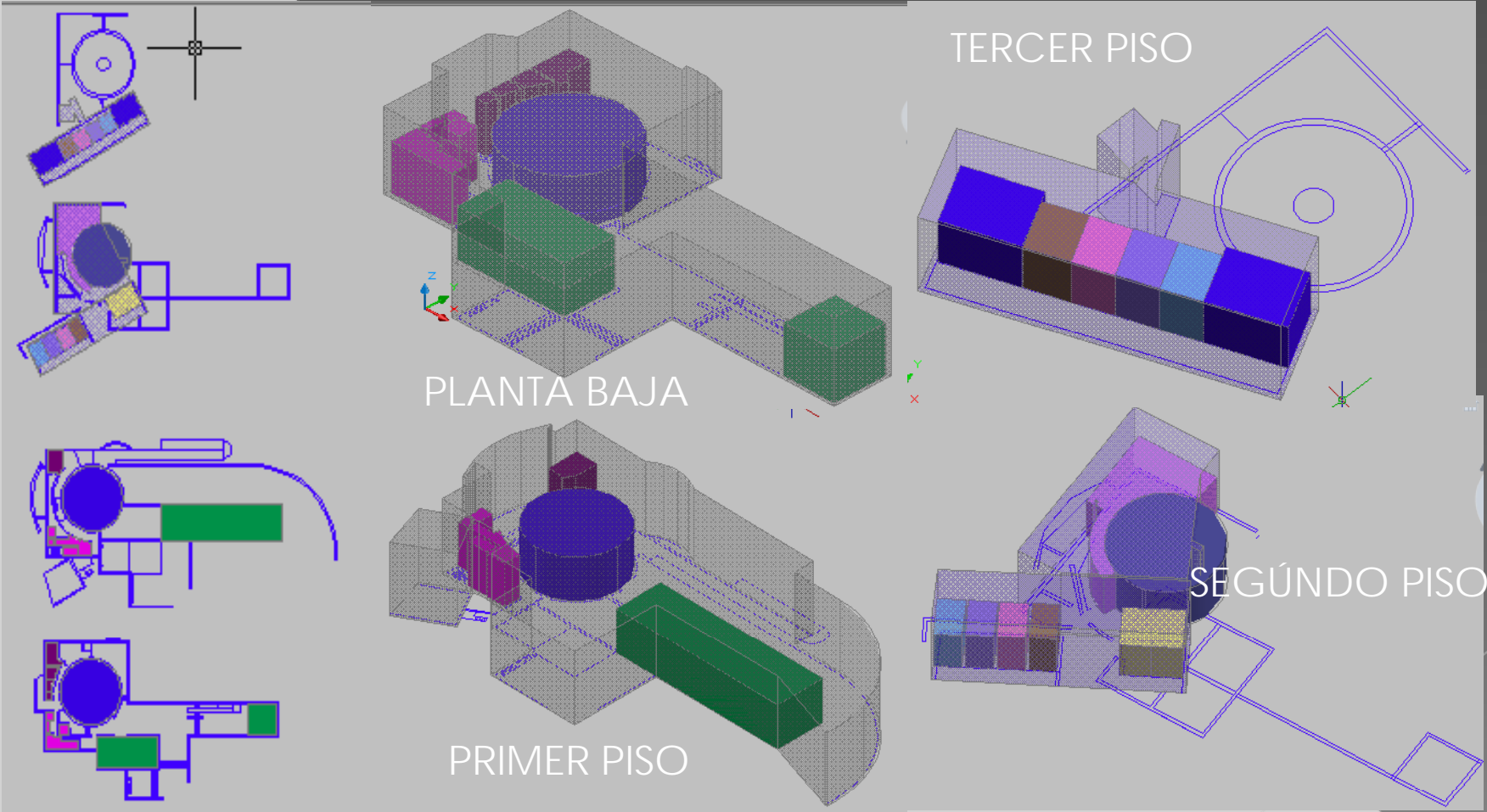
TERCER PISO



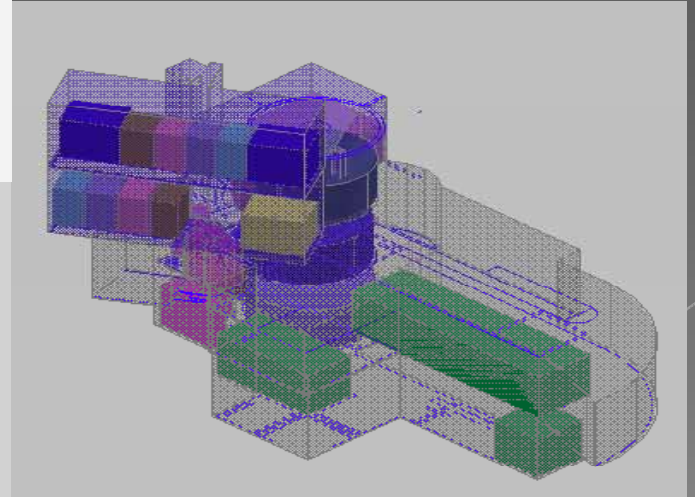
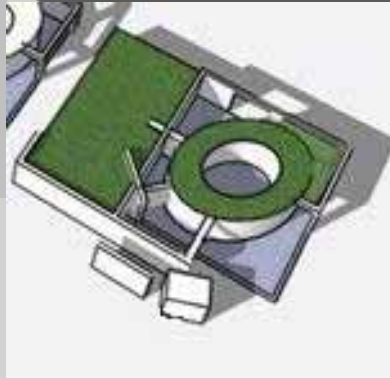
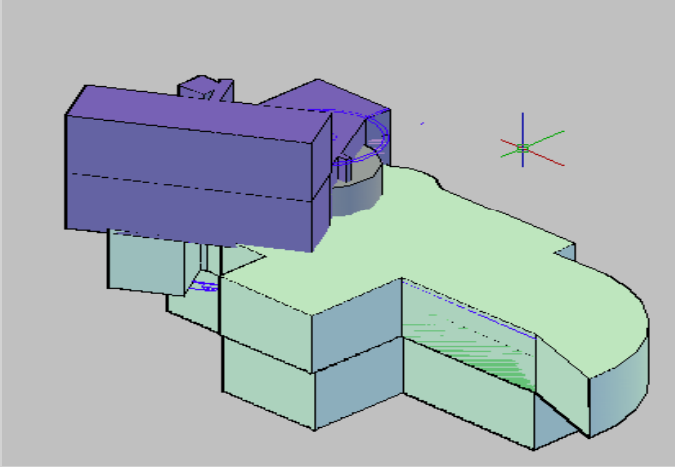
CIRCULACIONES



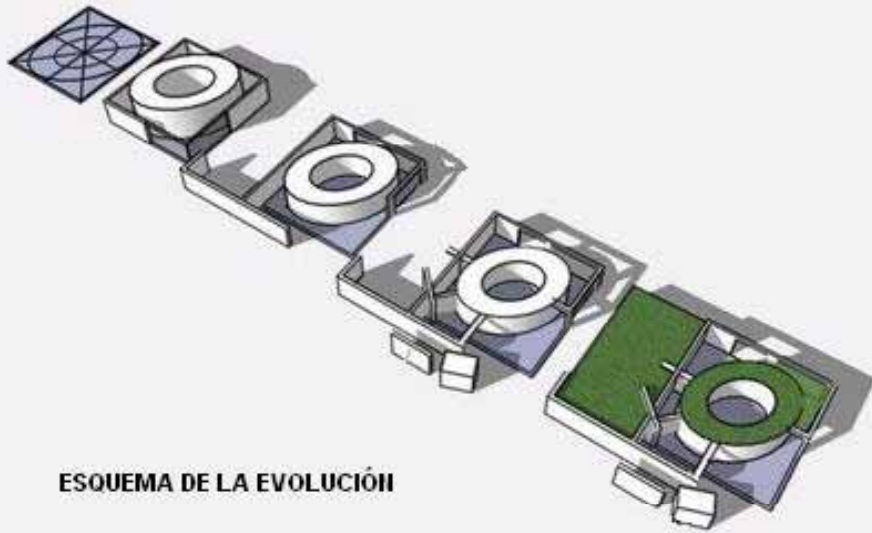
ZONIFICACIÓN



VOLUMETRIA



ESQUEMA DE EVOLUCIÓN

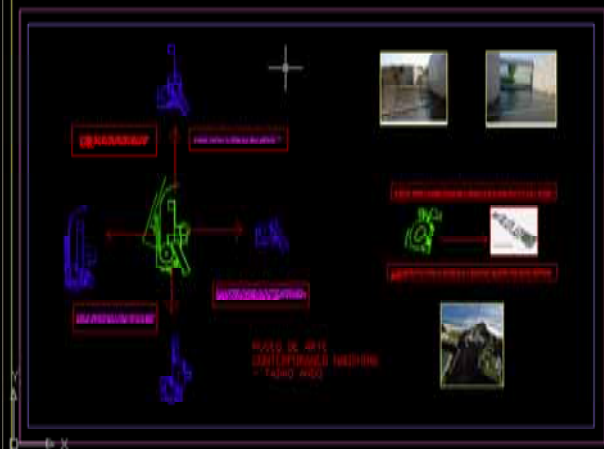


ESQUEMA DE LA EVOLUCIÓN

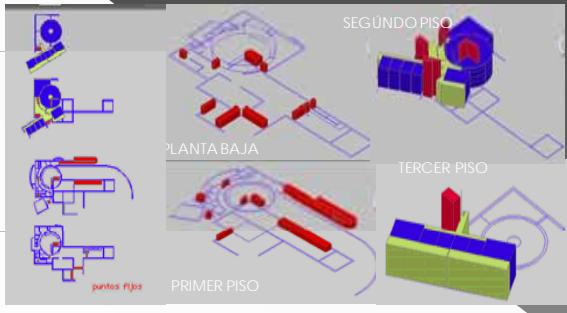


AXONOMETRÍA PRINCIPAL

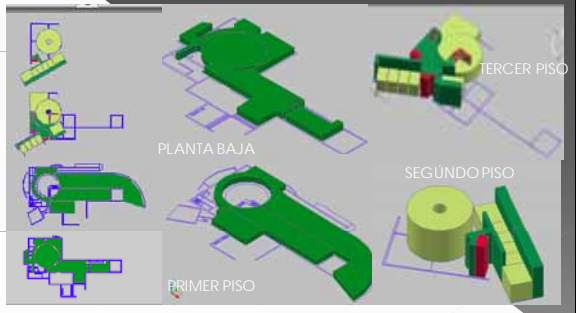




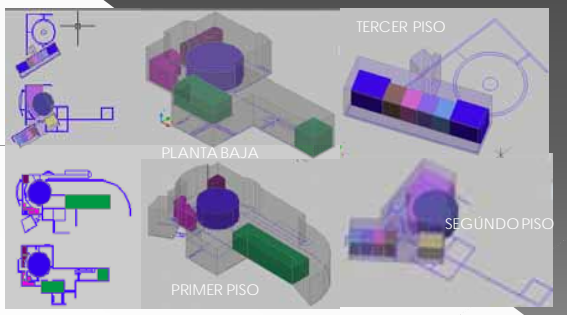
PUNTOS FIJOS



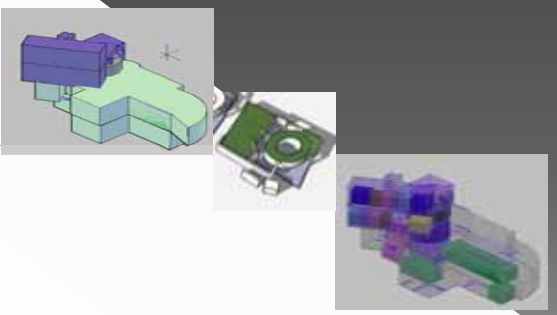
CIRCULACIONES



ZONIFICACIÓN



VOLUMETRIA



ESQUEMA DE EVOLUCIÓN



AXONOMETRÍA PRINCIPAL



MUSEO DE ARTE
CONTEMPORÁNEO
NAOSHIMA
(TADAO ANDO)